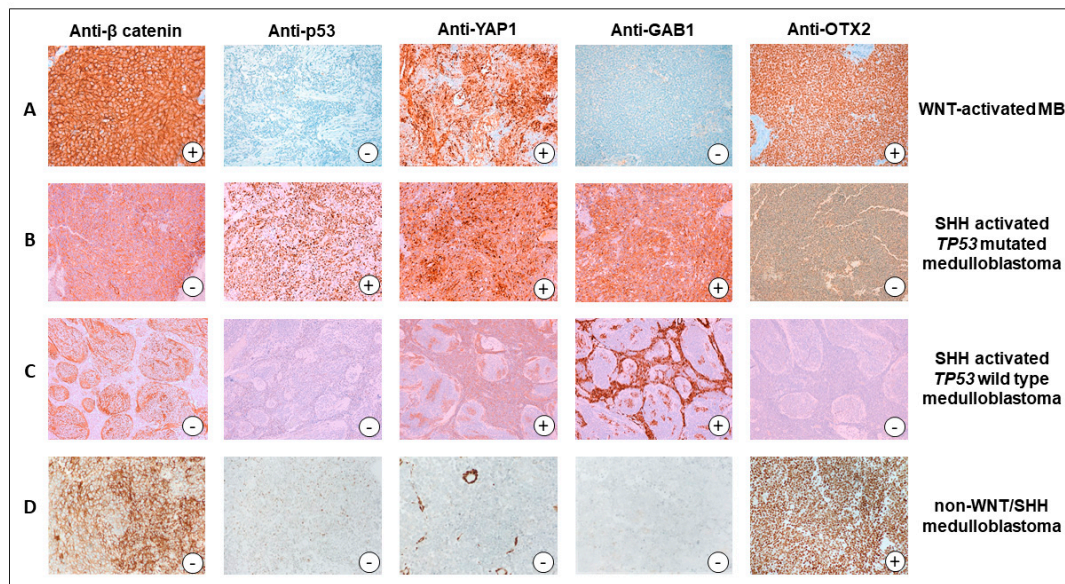


**Supplementary Figure S1:** Histologically defined entities of our medulloblastoma (MB) cohort. **Fig S1A:** Classic MB (Hematoxylin-eosin stain, left:40x magnification, right:400x magnification). **Fig S1B:** Anaplastic MB (Hematoxylin-eosin stain, left:100x magnification, right:400x magnification). **Fig S1C:** Desmoplastic MB (Hematoxylin-eosin stain, left:100x magnification, right:200x magnification). **Fig S1D:** Large Cell MB (Hematoxylin-eosin stain, left:40x magnification, right:400x magnification).



**Supplementary Figure S2:** Characteristic immunophenotype of the different molecular subgroups in our medulloblastoma (MB) cohort. **Fig S2A:** WNT-activated MB (200x magnification). **Fig S2B:** SHH-activated TP53 mutated MB (200x magnification). **Fig S2C:** SHH-activated TP53 wild type MB (100x magnification). **Fig S2D:** Non-WNT/SHH MB (200x magnification).